

SHAGREEN

product overview

Our Shagreen cowhide offers a uniquely opulent, rich texture. Its palette includes soft, alluring colors that shimmer and glow, and saturated shades that add drama to any room. This durable leather is ideal for upholstery, furniture wrapping, and vertical applications.



SHAGREEN

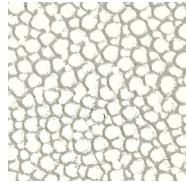
colorways



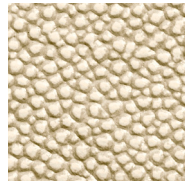
White
SH17



White — City Lights
SH100CL



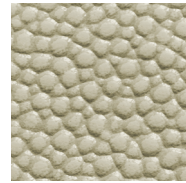
Ice Ice Baby
SH42



Foundation
SH23



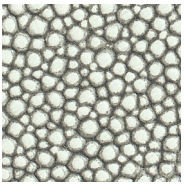
Blushing
SH45



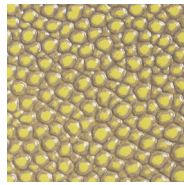
Gris Ligeró
SH36



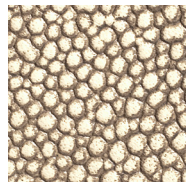
Robin's Egg
SH47



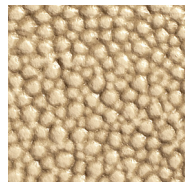
Ink
SH37



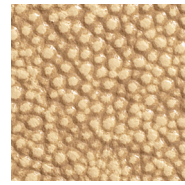
Cactus
SH48



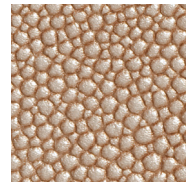
Smokey
SH94



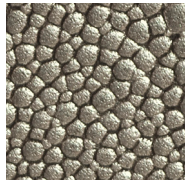
Sha Beige
SH30



Cous Cous
SH01



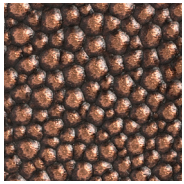
Café Latte
SH101CL



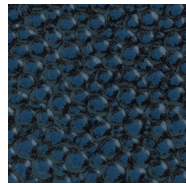
Smoke
SH102CL



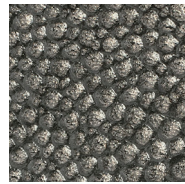
Grey Oyster
SH07



Copper
SH50



Newest Navy
SH53



Pewter
SH52



Caviar
SH04



Black
SH108CL

SHAGREEN

specifications

Content	European full grain vegetable-tanned aniline-dyed cowhide
Finish	Durable protective finish, hand-antiqued, EDGE stain release
Size	Avg 28 sf / Platelines 24" / 1/2 hide
Average Usable Area	28" x 65"
Thickness	1.2-1.3 mm
Weight Per Square Foot	3 oz
Texture	Embossed grain
Colors Available	20 standard colors
Custom	Custom coloring available
Applications	Residential, Hospitality
Use	Upholstery and vertical applications
Wellness	Greenguard Gold certified
EDGE Stain Release	Standard on all colors
Performance	Recommended for high-traffic areas, light patina
Considerations	Platelines every 24"

testing

Durability & Strength	Breaking Force ASTM 2208 (100lbs): Complies
	Crocking ASTM D 5053: Class 4-5
	Elongation ASTM D 2211 (20-50%): Complies
	Light Fastness 72hrs/ISO 105-B02: Class 4-5
	Tearing Strength ASTM D 4705 (15lbs): Complies
Flammability	Boston Fire Code (BFD 1X-1): Complies
	California Technical Bulletin 117-2013: Class 1
	Cigarette Ignition Resistance (NFPA 260): Pass
	Surface Building Characteristic of Building Materials (ASTM E 84): Class B

maintenance

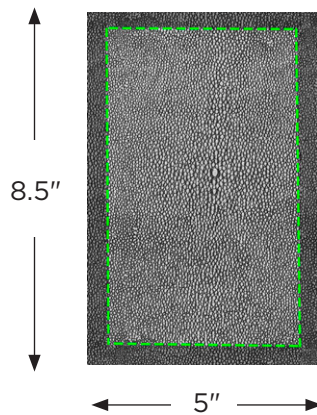
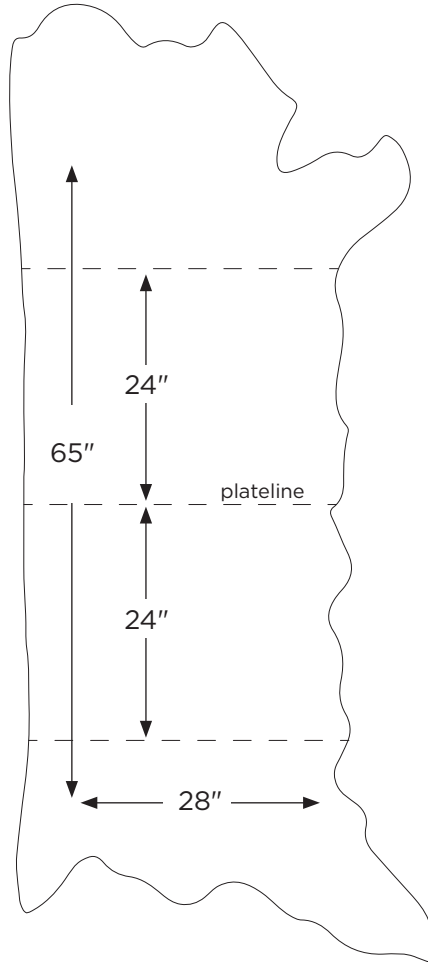
If a spill or stain should occur, blot immediately with a clean, absorbent cloth or sponge. Do not rub with force or pressure. A drop of saddle soap on a damp cloth may remove dirt.



SHAGREEN

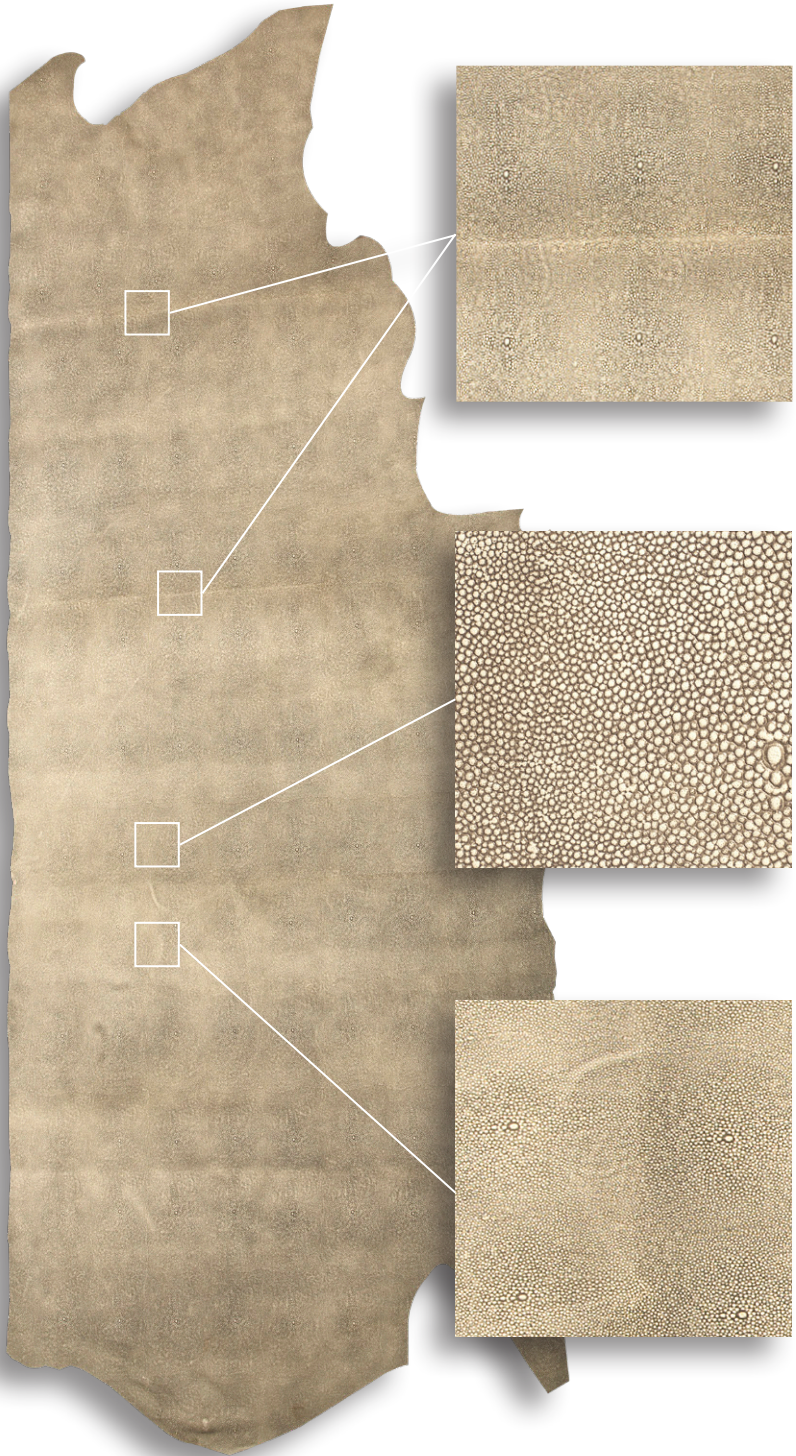
hide depiction

Avg 28 sf / Platelines 24" / 1/2 hide
Average Usable Area 28" x 65"
Pattern vertical to backbone
Pattern repeat at 5" x 8.5"



SHAGREEN

embossing overview



Platelines

We use a plate to emboss this pattern, which offers a deeper, richer emboss. Platelines appear every 24 inches, approximately three times on one half hide. The pattern and color combination both contribute to the variations in how obvious these lines appear.

Pattern Depth

Leather is a natural product and it may take the embossing effect differently across the hide. There will be some variation in the depth of the embossed pattern print.

Variation in Hand Antiquing

Shagreen is a hand-antiqued leather. Therefore, there will be some variation in color and tonal effect of the tipping within a hide and from hide to hide. High-low color combinations will accentuate platelines as well as handling marks within the pattern. This is natural.